

Mobi Zoom

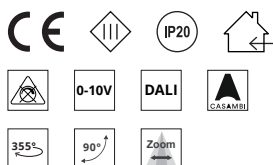
Low-Voltage Tracksystem



Low-voltage track
Integrated power supply

- White
- Black

Features



Electrical system

Total power consumption:	12 W
Power input:	48 Vdc
Operating temperature:	-10 °C ~ 35 °C
Protection class:	III
Control protocol:	Non-DIM / 0-10V / DALI / CASAMBI

Light source

LED type:	COB
Luminous flux:	730 lm
Colour temperature (CCT):	2700 K / 3000 K / 4000 K / Tunable
Colour rendering index (CRI):	Ra >90
Beam angle (BA):	17-45°

Housing

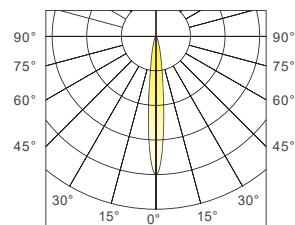
Material:	Aluminium
Weight:	x,x kg

Warranty

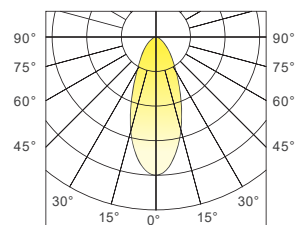
Period:	5 years
---------	---------

Luminous intensity distribution curves

BA 17°			
H (m)	En (lx)	S (sq.m)	
1	4070	0,1	
2	1017	0,3	
3	452	0,6	
4	254	1,1	
5	162	1,7	

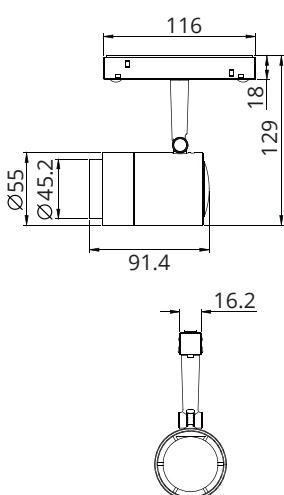


BA 45°			
H (m)	En (lx)	S (sq.m)	
1	1132	0,6	
2	283	2,2	
3	125	5,0	
4	70	8,8	
5	45	13,8	



Dimensions

S58-L



Nomenclature

Product Code	System power	CCT	CRI	Beam angle	Control	Colour
M422	12 (12W)	27 (2700K)	90 (90)	Z5 (17°-45°)	N (Non-Dim)	01 (Black)
		30 (3000K)			A (0-10V Dim)	02 (White)
		40 (4000K)			7 (CASAMBI)	
					D (DALI-DT6)	
					E (DALI-DT8)	
		TW (2700-5700K)				

Tolerance: ±2mm

*Applicable model: M42212xx90Z6xxx (xx: dynamic codes)